



VISION 2020

long-range plan



**LONG-RANGE PLANNING COMMITTEE
CYPRESS-FAIRBANKS ISD
FACILITIES ASSESSMENT
January 14, 2014**



LONG-RANGE PLANNING COMMITTEE



AGENDA:

- The Facilities Assessment Process
 - How is the information gathered?
 - Format of the Report
 - Review of Estimated Costs
- Questions?



The Process

The Facilities Assessment Process



Complete a Facilities Assessment that would include the following:

- ❖ *Examples of deficiencies in the districts facilities*
- ❖ *Recommendations for critical replacement of items that are close to or have surpassed their life expectancy*
- ❖ *Identify items that may be repairable warranty items*
- ❖ *Identify items that may be considered work order items completed by CFISD Maintenance*
- ❖ *Develop cost estimates for repairs and replacement needs*
- ❖ *Identify priorities and assign a schedule for replacement*
- ❖ *Include input from the Administration and Staff of Cy-Fair ISD*

The Facilities Assessment Process



Multiple Meetings

- Initial Kick-Off Meeting
(with Key Administrators)
- Multiple Review Meetings
(with Key Administrators)

The Facilities Assessment Process

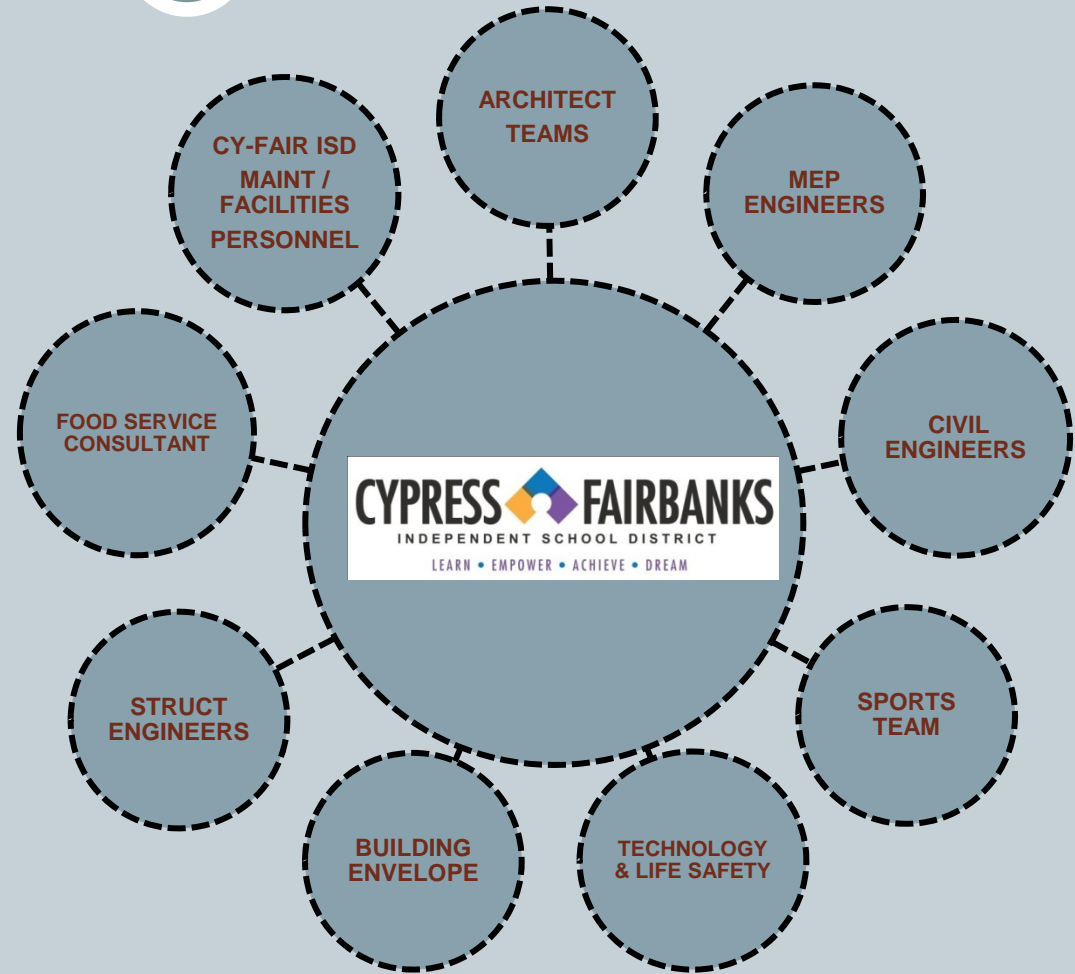


How is the information gathered?

- ❖ *Questionnaires are distributed to Maintenance Personnel and Program Directors for known deficiencies and problem areas, as well as district wide initiatives.*
- ❖ *Questionnaires are distributed to Principals and site based Stakeholders asking for known deficiencies and campus needs.*
- ❖ *Site assessment teams walked each facility (High Schools, Middle Schools, Elementary Schools & Support Facilities) and created a list of deficiencies and observations.*
- ❖ *Developed a database of work items to support findings.*
- ❖ *Teams re-walked schools as needed to confirm deficiencies and to confirm quantities for pricing.*

The Facilities Assessment Process

The Site Assessment Team



The Facilities Assessment Process

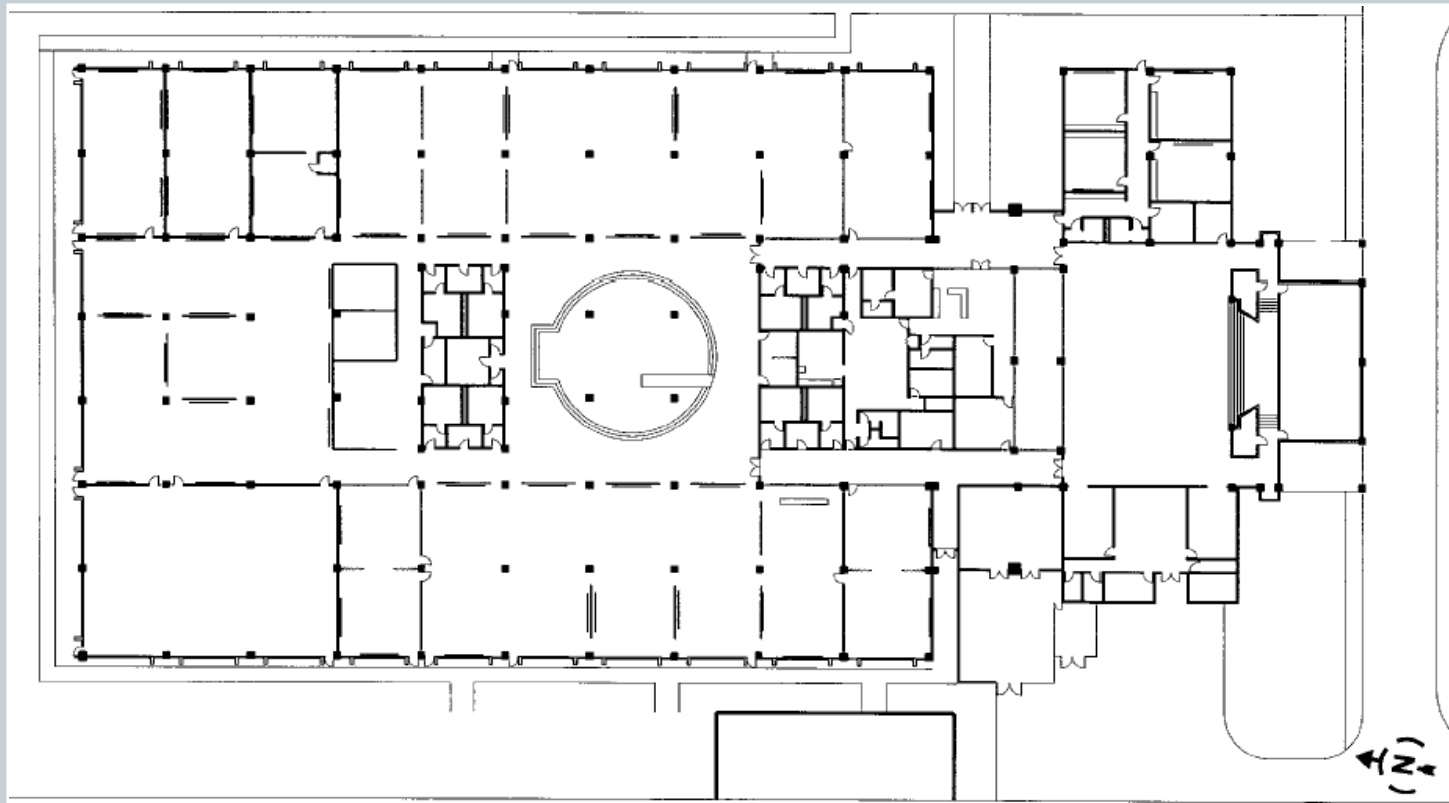
Assessment Teams were given Aerials of every facility to document findings



The Facilities Assessment Process



Assessment Teams were given floor plans of every facility to document findings



The Facilities Assessment Process



Criteria Used In The Evaluation

- ❖ *Texas Education Agency (TEA) Requirements*
- ❖ *Building Code Requirements*
- ❖ *Age of Facility*
- ❖ *Age of System*
- ❖ *Current Condition vs. Expected Life*
- ❖ *Cy-Fair ISD Program/District Standards*
- ❖ *Cy-Fair ISD Priority Maintenance Schedule*

The Facilities Assessment Process



Database

- *Microsoft Access based, so it is easy to maintain and update*
- *Organized by campus, priority and category*
- *Started with 2007 Facilities Assessment Items that did not make it into the Bond (Future Considerations)*

The Facilities Assessment Process



List of Disciplines

Civil
Architectural
Building Envelope
Mechanical
Electrical
Plumbing
Technology
Fire, Life Safety and Security
Athletics/Activities
Food Service
Other

The Facilities Assessment Process



List of Category Codes

<i>ACO</i>	<i>Acoustical Treatment</i>	<i>EDF</i>	<i>Elec Drinking Fountain</i>	<i>LTG</i>	<i>Lighting</i>	<i>SF</i>	<i>Site Fencing</i>
<i>ADA</i>	<i>Accessibility</i>	<i>EG</i>	<i>Emergency Generator</i>	<i>MBTB</i>	<i>Markerboard/Tackboard</i>	<i>SGN</i>	<i>Building Signage</i>
<i>ADD</i>	<i>Building Addition</i>	<i>ELE</i>	<i>Electrical</i>	<i>MECH</i>	<i>Mechanical</i>	<i>SOF</i>	<i>Exterior Soffit</i>
<i>AV</i>	<i>Audio/Visual Sound</i>	<i>EQ</i>	<i>Misc Equipment</i>	<i>MISC</i>	<i>Miscellaneous</i>	<i>SP</i>	<i>Site Paving / Sidewalks</i>
<i>BLC</i>	<i>Bleachers</i>	<i>ES</i>	<i>Exterior Soffit</i>	<i>MW</i>	<i>Millwork</i>	<i>STR</i>	<i>Structural/Foundation</i>
<i>BLD</i>	<i>Window Blinds</i>	<i>FA</i>	<i>Fire Alarm System</i>	<i>OTH</i>	<i>Other</i>	<i>SU</i>	<i>Site Utilities</i>
<i>CNPY</i>	<i>Covered Walkway Canopy</i>	<i>FLR</i>	<i>Flooring-Carpet, Tile, etc</i>	<i>PA</i>	<i>Public Address</i>	<i>SWR</i>	<i>Shower</i>
<i>CLG</i>	<i>Ceiling</i>	<i>FSPR</i>	<i>Fire Sprinkler</i>	<i>PGE</i>	<i>Playground Equip</i>	<i>TECH</i>	<i>Technology</i>
<i>CLK</i>	<i>Clock</i>	<i>GRP</i>	<i>Building Graphics</i>	<i>PLB</i>	<i>Building Plumbing</i>	<i>TP</i>	<i>Toilet Partition</i>
<i>CODE</i>	<i>Code Compliance</i>	<i>HDW</i>	<i>Hardware</i>	<i>PTG</i>	<i>Painting</i>	<i>WDW</i>	<i>Window</i>
<i>CWK</i>	<i>Casework</i>	<i>HVAC</i>	<i>Heat, Vent & Air</i>	<i>REN</i>	<i>Renovation</i>	<i>WRE</i>	<i>Wall Repair-Exterior</i>
<i>DC</i>	<i>Display Case</i>	<i>INT</i>	<i>Interior Finish</i>	<i>RFM</i>	<i>Roof Maintenance</i>	<i>WRI</i>	<i>Wall Repair-Interior</i>
<i>DR</i>	<i>Door</i>	<i>IRR</i>	<i>Irrigation</i>	<i>RFR</i>	<i>Roof Replacement</i>	<i>WS</i>	<i>Waterproofing Sealant</i>
<i>EA</i>	<i>Educational Adequacy</i>	<i>LOC</i>	<i>Locker</i>	<i>SD</i>	<i>Site Drainage</i>		
<i>ED</i>	<i>Electrical Distribution</i>	<i>LS</i>	<i>Life Safety</i>	<i>SEC</i>	<i>Security / Surveillance</i>		

The Facilities Assessment Process



List of Category Codes

CIVIL

ACO	Acoustical Treatment	EDF	Elec Drinking Fountain	LTG	Lighting	SF	Site Fencing
ADA	Accessibility	EG	Emergency Generator	MBTB	Markerboard/Tackboard	SGN	Building Signage
ADD	Building Addition	ELE	Electrical	MECH	Mechanical	SOF	Exterior Soffit
AV	Audio/Visual Sound	EQ	Misc Equipment	MISC	Miscellaneous	SP	Site Paving / Sidewalks
BLC	Bleachers	ES	Exterior Soffit	MW	Millwork	STR	Structural/Foundation
BLD	Window Blinds	FA	Fire Alarm System	OTH	Other	SU	Site Utilities
CNPY	Covered Walkway Canopy	FLR	Flooring-Carpet, Tile, etc	PA	Public Address	SWR	Shower
CLG	Ceiling	FSPR	Fire Sprinkler	PGE	Playground Equip	TECH	Technology
CLK	Clock	GRP	Building Graphics	PLB	Building Plumbing	TP	Toilet Partition
CODE	Code Compliance	HDW	Hardware	PTG	Painting	WDW	Window
CWK	Casework	HVAC	Heat, Vent & Air	REN	Renovation	WRE	Wall Repair-Exterior
DC	Display Case	INT	Interior Finish	RFM	Roof Maintenance	WRI	Wall Repair-Interior
DR	Door	IRR	Irrigation	RFR	Roof Replacement	WS	Waterproofing Sealant
EA	Educational Adequacy	LOC	Locker	SD	Site Drainage		
ED	Electrical Distribution	LS	Life Safety	SEC	Security / Surveillance		

The Facilities Assessment Process



List of Category Codes

ARCHITECTURAL

ACO Acoustical Treatment	EDF Elec Drinking Fountain	LTG Lighting	SF Site Fencing
ADA Accessibility	EG Emergency Generator	MBTB Markerboard/Tackboard	SGN Building Signage
ADD Building Addition	ELE Electrical	MECH Mechanical	SOF Exterior Soffit
AV Audio/Visual Sound	EQ Misc Equipment	MISC Miscellaneous	SP Site Paving / Sidewalks
BLC Bleachers	ES Exterior Soffit	MW Millwork	STR Structural/Foundation
BLD Window Blinds	FA Fire Alarm System	OTH Other	SU Site Utilities
CNPY Covered Walkway Canopy	FLR Flooring-Carpet, Tile, etc	PA Public Address	SWR Shower
CLG Ceiling	FSPR Fire Sprinkler	PGE Playground Equip	TECH Technology
CLK Clock	GRP Building Graphics	PLB Building Plumbing	TP Toilet Partition
CODE Code Compliance	HDW Hardware	PTG Painting	WDW Window
CWK Casework	HVAC Heat, Vent & Air	REN Renovation	WRE Wall Repair-Exterior
DC Display Case	INT Interior Finish	RFM Roof Maintenance	WRI Wall Repair-Interior
DR Door	IRR Irrigation	RFR Roof Replacement	WS Waterproofing Sealant
EA Educational Adequacy	LOC Locker	SD Site Drainage	
ED Electrical Distribution	LS Life Safety	SEC Security / Surveillance	

The Facilities Assessment Process



List of Category Codes

BUILDING ENVELOPE

ACO	Acoustical Treatment	EDF	Elec Drinking Fountain	LTG	Lighting	SF	Site Fencing
ADA	Accessibility	EG	Emergency Generator	MBTB	Markerboard/Tackboard	SGN	Building Signage
ADD	Building Addition	ELE	Electrical	MECH	Mechanical	SOF	Exterior Soffit
AV	Audio/Visual Sound	EQ	Misc Equipment	MISC	Miscellaneous	SP	Site Paving / Sidewalks
BLC	Bleachers	ES	Exterior Soffit	MW	Millwork	STR	Structural/Foundation
BLD	Window Blinds	FA	Fire Alarm System	OTH	Other	SU	Site Utilities
CNPY	Covered Walkway Canopy	FLR	Flooring-Carpet, Tile, etc	PA	Public Address	SWR	Shower
CLG	Ceiling	FSPR	Fire Sprinkler	PGE	Playground Equip	TECH	Technology
CLK	Clock	GRP	Building Graphics	PLB	Building Plumbing	TP	Toilet Partition
CODE	Code Compliance	HDW	Hardware	PTG	Painting	WDW	Window
CWK	Casework	HVAC	Heat, Vent & Air	REN	Renovation	WRE	Wall Repair-Exterior
DC	Display Case	INT	Interior Finish	RFM	Roof Maintenance	WRI	Wall Repair-Interior
DR	Door	IRR	Irrigation	RFR	Roof Replacement	WS	Waterproofing Sealant
EA	Educational Adequacy	LOC	Locker	SD	Site Drainage		
ED	Electrical Distribution	LS	Life Safety	SEC	Security / Surveillance		

The Facilities Assessment Process



List of Category Codes

MECHANICAL

ACO	Acoustical Treatment	EDF	Elec Drinking Fountain	LTG	Lighting	SF	Site Fencing
ADA	Accessibility	EG	Emergency Generator	MBTB	Markerboard/Tackboard	SGN	Building Signage
ADD	Building Addition	ELE	Electrical	MECH	Mechanical	SOF	Exterior Soffit
AV	Audio/Visual Sound	EQ	Misc Equipment	MISC	Miscellaneous	SP	Site Paving / Sidewalks
BLC	Bleachers	ES	Exterior Soffit	MW	Millwork	STR	Structural/Foundation
BLD	Window Blinds	FA	Fire Alarm System	OTH	Other	SU	Site Utilities
CNPY	Covered Walkway Canopy	FLR	Flooring-Carpet, Tile, etc	PA	Public Address	SWR	Shower
CLG	Ceiling	FSPR	Fire Sprinkler	PGE	Playground Equip	TECH	Technology
CLK	Clock	GRP	Building Graphics	PLB	Building Plumbing	TP	Toilet Partition
CODE	Code Compliance	HDW	Hardware	PTG	Painting	WDW	Window
CWK	Casework	HVAC	Heat, Vent & Air	REN	Renovation	WRE	Wall Repair-Exterior
DC	Display Case	INT	Interior Finish	RFM	Roof Maintenance	WRI	Wall Repair-Interior
DR	Door	IRR	Irrigation	RFR	Roof Replacement	WS	Waterproofing Sealant
EA	Educational Adequacy	LOC	Locker	SD	Site Drainage		
ED	Electrical Distribution	LS	Life Safety	SEC	Security / Surveillance		

The Facilities Assessment Process



List of Category Codes

ELECTRICAL

<i>ACO</i>	<i>Acoustical Treatment</i>	<i>EDF</i>	<i>Elec Drinking Fountain</i>	<i>LTG</i>	<i>Lighting</i>	<i>SF</i>	<i>Site Fencing</i>
<i>ADA</i>	<i>Accessibility</i>	<i>EG</i>	<i>Emergency Generator</i>	<i>MBTB</i>	<i>Markerboard/Tackboard</i>	<i>SGN</i>	<i>Building Signage</i>
<i>ADD</i>	<i>Building Addition</i>	<i>ELE</i>	<i>Electrical</i>	<i>MECH</i>	<i>Mechanical</i>	<i>SOF</i>	<i>Exterior Soffit</i>
<i>AV</i>	<i>Audio/Visual Sound</i>	<i>EQ</i>	<i>Misc Equipment</i>	<i>MISC</i>	<i>Miscellaneous</i>	<i>SP</i>	<i>Site Paving / Sidewalks</i>
<i>BLC</i>	<i>Bleachers</i>	<i>ES</i>	<i>Exterior Soffit</i>	<i>MW</i>	<i>Millwork</i>	<i>STR</i>	<i>Structural/Foundation</i>
<i>BLD</i>	<i>Window Blinds</i>	<i>FA</i>	<i>Fire Alarm System</i>	<i>OTH</i>	<i>Other</i>	<i>SU</i>	<i>Site Utilities</i>
<i>CNPY</i>	<i>Covered Walkway Canopy</i>	<i>FLR</i>	<i>Flooring-Carpet, Tile, etc</i>	<i>PA</i>	<i>Public Address</i>	<i>SWR</i>	<i>Shower</i>
<i>CLG</i>	<i>Ceiling</i>	<i>FSPR</i>	<i>Fire Sprinkler</i>	<i>PGE</i>	<i>Playground Equip</i>	<i>TECH</i>	<i>Technology</i>
<i>CLK</i>	<i>Clock</i>	<i>GRP</i>	<i>Building Graphics</i>	<i>PLB</i>	<i>Building Plumbing</i>	<i>TP</i>	<i>Toilet Partition</i>
<i>CODE</i>	<i>Code Compliance</i>	<i>HDW</i>	<i>Hardware</i>	<i>PTG</i>	<i>Painting</i>	<i>WDW</i>	<i>Window</i>
<i>CWK</i>	<i>Casework</i>	<i>HVAC</i>	<i>Heat, Vent & Air</i>	<i>REN</i>	<i>Renovation</i>	<i>WRE</i>	<i>Wall Repair-Exterior</i>
<i>DC</i>	<i>Display Case</i>	<i>INT</i>	<i>Interior Finish</i>	<i>RFM</i>	<i>Roof Maintenance</i>	<i>WRI</i>	<i>Wall Repair-Interior</i>
<i>DR</i>	<i>Door</i>	<i>IRR</i>	<i>Irrigation</i>	<i>RFR</i>	<i>Roof Replacement</i>	<i>WS</i>	<i>Waterproofing Sealant</i>
<i>EA</i>	<i>Educational Adequacy</i>	<i>LOC</i>	<i>Locker</i>	<i>SD</i>	<i>Site Drainage</i>		
<i>ED</i>	<i>Electrical Distribution</i>	<i>LS</i>	<i>Life Safety</i>	<i>SEC</i>	<i>Security / Surveillance</i>		

The Facilities Assessment Process



List of Category Codes

PLUMBING

ACO	Acoustical Treatment	EDF	Elec Drinking Fountain	LTG	Lighting	SF	Site Fencing
ADA	Accessibility	EG	Emergency Generator	MBTB	Markerboard/Tackboard	SGN	Building Signage
ADD	Building Addition	ELE	Electrical	MECH	Mechanical	SOF	Exterior Soffit
AV	Audio/Visual Sound	EQ	Misc Equipment	MISC	Miscellaneous	SP	Site Paving / Sidewalks
BLC	Bleachers	ES	Exterior Soffit	MW	Millwork	STR	Structural/Foundation
BLD	Window Blinds	FA	Fire Alarm System	OTH	Other	SU	Site Utilities
CNPY	Covered Walkway Canopy	FLR	Flooring-Carpet, Tile, etc	PA	Public Address	SWR	Shower
CLG	Ceiling	FSPR	Fire Sprinkler	PGE	Playground Equip	TECH	Technology
CLK	Clock	GRP	Building Graphics	PLB	Building Plumbing	TP	Toilet Partition
CODE	Code Compliance	HDW	Hardware	PTG	Painting	WDW	Window
CWK	Casework	HVAC	Heat, Vent & Air	REN	Renovation	WRE	Wall Repair-Exterior
DC	Display Case	INT	Interior Finish	RFM	Roof Maintenance	WRI	Wall Repair-Interior
DR	Door	IRR	Irrigation	RFR	Roof Replacement	WS	Waterproofing Sealant
EA	Educational Adequacy	LOC	Locker	SD	Site Drainage		
ED	Electrical Distribution	LS	Life Safety	SEC	Security / Surveillance		

The Facilities Assessment Process



List of Category Codes

TECHNOLOGY

ACO	Acoustical Treatment	EDF	Elec Drinking Fountain	LTG	Lighting	SF	Site Fencing
ADA	Accessibility	EG	Emergency Generator	MBTB	Markerboard/Tackboard	SGN	Building Signage
ADD	Building Addition	ELE	Electrical	MECH	Mechanical	SOF	Exterior Soffit
AV	Audio/Visual Sound	EQ	Misc Equipment	MISC	Miscellaneous	SP	Site Paving / Sidewalks
BLC	Bleachers	ES	Exterior Soffit	MW	Millwork	STR	Structural/Foundation
BLD	Window Blinds	FA	Fire Alarm System	OTH	Other	SU	Site Utilities
CNPY	Covered Walkway Canopy	FLR	Flooring-Carpet, Tile, etc	PA	Public Address	SWR	Shower
CLG	Ceiling	FSPR	Fire Sprinkler	PGE	Playground Equip	TECH	Technology
CLK	Clock	GRP	Building Graphics	PLB	Building Plumbing	TP	Toilet Partition
CODE	Code Compliance	HDW	Hardware	PTG	Painting	WDW	Window
CWK	Casework	HVAC	Heat, Vent & Air	REN	Renovation	WRE	Wall Repair-Exterior
DC	Display Case	INT	Interior Finish	RFM	Roof Maintenance	WRI	Wall Repair-Interior
DR	Door	IRR	Irrigation	RFR	Roof Replacement	WS	Waterproofing Sealant
EA	Educational Adequacy	LOC	Locker	SD	Site Drainage		
ED	Electrical Distribution	LS	Life Safety	SEC	Security / Surveillance		

The Facilities Assessment Process



List of Category Codes

FIRE, LIFE SAFETY AND SECURITY

ACO	<i>Acoustical Treatment</i>	EDF	<i>Elec Drinking Fountain</i>	LTG	<i>Lighting</i>	SF	<i>Site Fencing</i>
ADA	<i>Accessibility</i>	EG	<i>Emergency Generator</i>	MBTB	<i>Markerboard/Tackboard</i>	SGN	<i>Building Signage</i>
ADD	<i>Building Addition</i>	ELE	<i>Electrical</i>	MECH	<i>Mechanical</i>	SOF	<i>Exterior Soffit</i>
AV	<i>Audio/Visual Sound</i>	EQ	<i>Misc Equipment</i>	MISC	<i>Miscellaneous</i>	SP	<i>Site Paving / Sidewalks</i>
BLC	<i>Bleachers</i>	ES	<i>Exterior Soffit</i>	MW	<i>Millwork</i>	STR	<i>Structural/Foundation</i>
BLD	<i>Window Blinds</i>	FA	<i>Fire Alarm System</i>	OTH	<i>Other</i>	SU	<i>Site Utilities</i>
CNPY	<i>Covered Walkway Canopy</i>	FLR	<i>Flooring-Carpet, Tile, etc</i>	PA	<i>Public Address</i>	SWR	<i>Shower</i>
CLG	<i>Ceiling</i>	FSPR	<i>Fire Sprinkler</i>	PGE	<i>Playground Equip</i>	TECH	<i>Technology</i>
CLK	<i>Clock</i>	GRP	<i>Building Graphics</i>	PLB	<i>Building Plumbing</i>	TP	<i>Toilet Partition</i>
CODE	<i>Code Compliance</i>	HDW	<i>Hardware</i>	PTG	<i>Painting</i>	WDW	<i>Window</i>
CWK	<i>Casework</i>	HVAC	<i>Heat, Vent & Air</i>	REN	<i>Renovation</i>	WRE	<i>Wall Repair-Exterior</i>
DC	<i>Display Case</i>	INT	<i>Interior Finish</i>	RFM	<i>Roof Maintenance</i>	WRI	<i>Wall Repair-Interior</i>
DR	<i>Door</i>	IRR	<i>Irrigation</i>	RFR	<i>Roof Replacement</i>	WS	<i>Waterproofing Sealant</i>
EA	<i>Educational Adequacy</i>	LOC	<i>Locker</i>	SD	<i>Site Drainage</i>		
ED	<i>Electrical Distribution</i>	LS	<i>Life Safety</i>	SEC	<i>Security / Surveillance</i>		

The Facilities Assessment Process



List of Category Codes

ATHLETICS/ACTIVITIES

ACO Acoustical Treatment	EDF Elec Drinking Fountain	LTG Lighting	SF Site Fencing
ADA Accessibility	EG Emergency Generator	MBTB Markerboard/Tackboard	SGN Building Signage
ADD Building Addition	ELE Electrical	MECH Mechanical	SOF Exterior Soffit
AV Audio/Visual Sound	EQ Misc Equipment	MISC Miscellaneous	SP Site Paving / Sidewalks
BLC Bleachers	ES Exterior Soffit	MW Millwork	STR Structural/Foundation
BLD Window Blinds	FA Fire Alarm System	OTH Other	SU Site Utilities
CNPY Covered Walkway Canopy	FLR Flooring-Carpet, Tile, etc	PA Public Address	SWR Shower
CLG Ceiling	FSPR Fire Sprinkler	PGE Playground Equip	TECH Technology
CLK Clock	GRP Building Graphics	PLB Building Plumbing	TP Toilet Partition
CODE Code Compliance	HDW Hardware	PTG Painting	WDW Window
CWK Casework	HVAC Heat, Vent & Air	REN Renovation	WRE Wall Repair-Exterior
DC Display Case	INT Interior Finish	RFM Roof Maintenance	WRI Wall Repair-Interior
DR Door	IRR Irrigation	RFR Roof Replacement	WS Waterproofing Sealant
EA Educational Adequacy	LOC Locker	SD Site Drainage	
ED Electrical Distribution	LS Life Safety	SEC Security / Surveillance	

The Facilities Assessment Process



List of Category Codes

FOOD SERVICE

ACO	Acoustical Treatment	EDF	Elec Drinking Fountain	LTG	Lighting	SF	Site Fencing
ADA	Accessibility	EG	Emergency Generator	MBTB	Markerboard/Tackboard	SGN	Building Signage
ADD	Building Addition	ELE	Electrical	MECH	Mechanical	SOF	Exterior Soffit
AV	Audio/Visual Sound	EQ	Misc Equipment	MISC	Miscellaneous	SP	Site Paving / Sidewalks
BLC	Bleachers	ES	Exterior Soffit	MW	Millwork	STR	Structural/Foundation
BLD	Window Blinds	FA	Fire Alarm System	OTH	Other	SU	Site Utilities
CNPY	Covered Walkway Canopy	FLR	Flooring-Carpet, Tile, etc	PA	Public Address	SWR	Shower
CLG	Ceiling	FSPR	Fire Sprinkler	PGE	Playground Equip	TECH	Technology
CLK	Clock	GRP	Building Graphics	PLB	Building Plumbing	TP	Toilet Partition
CODE	Code Compliance	HDW	Hardware	PTG	Painting	WDW	Window
CWK	Casework	HVAC	Heat, Vent & Air	REN	Renovation	WRE	Wall Repair-Exterior
DC	Display Case	INT	Interior Finish	RFM	Roof Maintenance	WRI	Wall Repair-Interior
DR	Door	IRR	Irrigation	RFR	Roof Replacement	WS	Waterproofing Sealant
EA	Educational Adequacy	LOC	Locker	SD	Site Drainage		
ED	Electrical Distribution	LS	Life Safety	SEC	Security / Surveillance		

The Facilities Assessment Process



List of Source Codes

FRP *Facilities Review with District Personnel*

FR *Facilities Review*

IFQ *Instructional Facilities Questionnaire*

MQ *Maintenance Department Questionnaire*

The Facilities Assessment Process



List of Priority Codes

1. *Must Do – Legal, Safety Reason and Critical Replacements – (Life Expectancy 1 to 3 years)*
2. *Should Do – Curricular, Instructional, Program Need – (Life Expectancy 3 to 6 years)*
3. *Would Like To Do – Curricular, Instructional, and Program Enhancements– (Life Expectancy 6 to 10 years)*
4. *Future Consideration – Not through bond funds at this time – (Life Expectancy 10 plus years)*

The Facilities Assessment Process



How to Read the Report

ELECTRICAL - LIGHTING

DISCIPLINE REPORT

Print Date: 1/13/2014

Proposed Work Items

All costs are shown in 2014 dollars. The cost of all work items after this date should be adjusted accordingly.

DISCIPLINE	ITEM NO.	PRIORITY CODE	ITEM DESCRIPTION	DEPT. CODE	SOURCE CODE	CLASS. CODE	COST
High School							
CYPRESS CREEK HIGH SCHOOL							
Electrical	E10	3	Replace HID high bay light fixture in competition gymnasium with LED/fluorescent fixtures.		FRP	LTG	\$206,925.88
Electrical	E11	3	Replace site lighting with LED.		FR	SL	\$206,925.88
Electrical	E2	3	Replace lighting over bookshelves in Library.		FR	LTG	\$24,831.11
Electrical	E9	3	Replace HID high bay light fixture in auxiliary gymnasium with LED/fluorescent fixtures.		FRP	LTG	\$165,540.70
Subtotal							\$604,223.57

The Facilities Assessment Process

Format of Facilities Information

CYPRESS SPRINGS HIGH SCHOOL



CYPRESS-FAIRBANKS ISD

7909 FRY RD
CYPRESS, TEXAS 77433-3240



ORIGINAL BUILDING COMPLETED: 1997
ADDITIONS COMPLETED: 2005, 2009
RENOVATIONS COMPLETED: 2009
BUILDING AREA: 487,464 SF

The Facilities Assessment Process



CYPRESS SPRINGS HIGH SCHOOL



CYPRESS-FAIRBANKS ISD

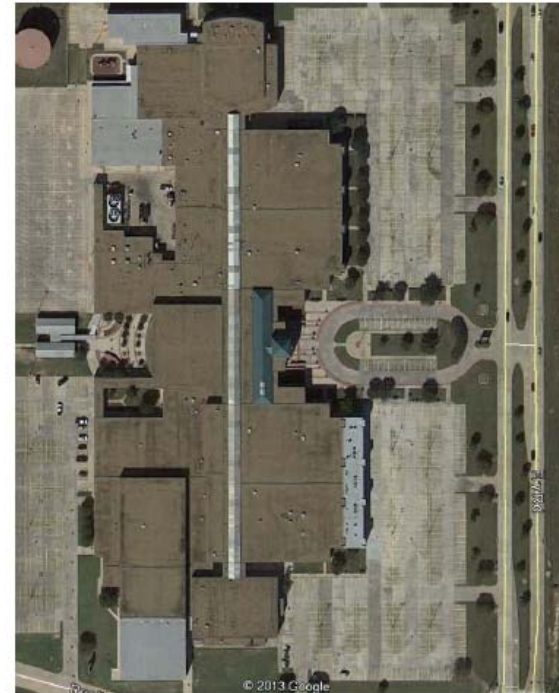


TOTAL ACRES: 59.774

CYPRESS SPRINGS HIGH SCHOOL



CYPRESS-FAIRBANKS ISD



The Facilities Assessment Process

CYPRESS SPRINGS HIGH SCHOOL

FACILITY SUMMARY REPORT

Proposed Work Items

All costs are shown in 2013 dollars. The cost of all work items after this date should be adjusted accordingly.

Priority	Total Cost
Priority - MP	\$0.00
Priority - 1	\$9,504,898.51
Priority - 2	\$61,005,981.99
Priority - 3	\$11,956,989.52
Priority - 4	\$0.00
Priority - BM	\$55,386.52
Priority - TBD	\$19,147,007.06

DISCIPLINE	PRIORITY-MP	PRIORITY-1	PRIORITY-2	PRIORITY-3	PRIORITY-4	COST
Civil	\$0.00	\$0.00	\$309,421.88	\$402,248.44	\$0.00	\$711,670.31
Architectural	\$0.00	\$0.00	\$33,258,962.13	\$5,815,584.14	\$0.00	\$41,017,406.22
Building Envelope	\$0.00	\$5,979,577.73	\$8,424,010.55	\$0.00	\$0.00	\$14,403,588.28
Mechanical	\$0.00	\$0.00	\$6,054,612.54	\$513,640.31	\$0.00	\$6,568,252.85
Electrical	\$0.00	\$233,613.52	\$92,826.56	\$795,214.22	\$0.00	\$1,121,654.30
Plumbing	\$0.00	\$0.00	\$7,339,022.74	\$0.00	\$0.00	\$7,339,022.74
Technology	\$0.00	\$0.00	\$1,972,564.45	\$0.00	\$0.00	\$1,972,564.45
Fire, Life Safety, & Security	\$0.00	\$3,055,541.02	\$265,329.26	\$2,475,375.00	\$0.00	\$5,796,245.27
Sports	\$0.00	\$236,166.25	\$3,289,231.89	\$1,885,307.48	\$0.00	\$22,670,239.24
Food Service	\$0.00	\$0.00	\$0.00	\$69,619.92	\$0.00	\$69,619.92
Priority Totals	\$0.00	\$9,504,898.51	\$61,005,981.99	\$11,956,989.52	\$0.00	

Totals MP+P1	\$9,504,898.51
Totals MP+P1+P2	\$70,510,880.50
Totals MP+P1+P2+P3	\$82,467,870.02
Totals MP+P1+P2+P3+P4	\$82,467,870.02



CYPRESS SPRINGS HIGH SCHOOL

DISCIPLINE REPORT

Proposed Work Items

All costs are shown in 2013 dollars. The cost of all work items after this date should be adjusted accordingly.

DISCIPLINE	ITEM NO.	ITEM DESCRIPTION	PRIORITY CODE	SOURCE CODE	CLASS. CODE	TOTAL COST
CIVIL						\$711,670.31
	C1	Eliminate erosion around drainage grates around practice fields.	1	IFG	SD	\$0.00
	C1	Provide new site drains in outdoor playground.	2	FR	SD	\$0.00
	C2	Provide connecting drive from back parking lot to the bus loop behind Greenhouse Road to Andre Elementary School.	2	IFG	SP	\$0.00
	C2	Install pavement joint sealant.	2	FR	SP	\$309,421.88
	C3	Provide new site drains in outdoor playground.	2	FR	SD	\$0.00
	C4	Erosion around grate inlets around football fields	2	IFG	SD	\$0.00
	C3	Perform miscellaneous paving repairs.	3	FR	SP	\$46,413.28
	C4	Restrip all existing pavement.	3	FR	SP	\$309,421.88
	C5	Misc. Paving Repairs	3	FR	SP	\$46,413.28
	C5	Provide connecting drive from back parking lot to the bus loop behind Greenhouse Road to Andre Elementary School.	4	IFG	SP	\$0.00
ARCHITECTURAL						\$41,017,406.22
	A1	Provide automatic electric hand dryers at all restrooms.	2	IFG	EQ	\$185,653.13
	A1	Provide two (2) new ice machines in Athletics.	2	MO	EQ	\$27,229.13
	A2	Provide new clothes washer and dryer in Athletics (see Maintenance Department Questionnaire).	2	FR	EQ	\$51,054.61
	A2	Provide new clothes washer and dryer in Athletics; two (2) sets (see Maintenance Department Questionnaire).	2	FR	EQ	\$109,844.77
	A3	Replace all door hardware throughout entire facility (see Maintenance Department Questionnaire).	2	FR	HOW	\$906,606.09
	A3	Replace all door hardware throughout entire facility (see Maintenance Department Questionnaire).	2	FR	HOW	\$906,606.09
	A4	Replace lockers in vocational and drill team areas (see Maintenance Department Questionnaire).	2	FR	LOC	\$56,695.94
	A4	Replace lockers in vocational and drill team areas (see Maintenance Department Questionnaire).	2	FR	LOC	\$56,695.94
	A5	Provide new non-slip floor coating around Natatorium (include repair of deck drainage issue).	2	MO	FLR	\$54,148.83
	A5	Provide new non-slip floor coating around pool and locker rooms (include repair of deck drainage issue). (See Instructional Facilities Questionnaire.)	2	MO	FLR	\$100,562.11
	A6	Replace vinyl tile carpet and base throughout facility. (See Instructional Facilities Questionnaire)	2	FR	FLR	\$2,212,366.41
	A6	Replace vinyl tile carpet and base throughout facility. (See Instructional Facilities Questionnaire)	2	FR	FLR	\$2,212,366.41
	A7	Sand and refinish wood floor in the Competition Gym (see Instructional Facilities Questionnaire).	2	FR	FLR	\$105,976.99
	A7	Construct additional Large Group Instructional Area.	2	IFG	ADD	\$1,253,158.99
	A8	Replace existing casework in Administration, Library (shelving and circulation desk) and Academic Areas.	2	FR	CWK	\$1,333,608.28
	A8	Provide new dishwasher in Teacher's Lounge.	2	IFG	EQ	\$1,547.11
	A9	Renovate Men's and Women's Athletic Offices (include ADA accessible restroom, shower, lockers, and casework).	2	IFG	REN	\$371,306.25
	A9	Paint underneath roof deck and structure at gyms.	2	FR	PTG	\$38,677.73
	A10	Replace Competition Gym wood floor. (See Instructional Facilities Questionnaire)	2	FR	FLR	\$306,513.31





The Findings

The Facilities Assessment Process



• Facilities Needs by Priority

○ <i>Priority One Items</i>	\$39,619,527.04
○ <i>Priority Two Items</i>	\$468,617,979.31
○ <i>Priority Three Items</i>	\$370,731,382.72
○ <i>Priority Four Items</i>	\$218,383,561.83
✦ <i>ADA/Asbestos/Emergency</i>	\$ 15,000,000.00

Total Projected Costs:

\$1,112,352,450.90

The Facilities Assessment Process



- **ASSET PROTECTION**

- ✦ *Protecting Investment*
- ✦ *Maintaining the Learning Environment*

- **PROGRAM/BUILDING ENHANCEMENT**

- ✦ *Enhances the Facility*
- ✦ *Enhances a Program*



The Facilities Assessment Process



• Facilities Needs by Discipline

TOTALS:	Priority	1	2	3	4
<i>CIVIL</i>		\$19,086.84	\$41,521,296.59	\$30,052,193.03	\$27,099,013.10
<i>ARCH</i>		\$2,190,931.24	\$193,301,317.86	\$151,441,376.30	\$162,290,228.65
<i>BUILDING ENVELOPE</i>		\$26,191,348.46	\$13,452,433.48	\$44,640,247.32	\$2,770,489.21
<i>MECHANICAL</i>		\$303,767.19	\$107,153,065.21	\$19,446,943.76	\$91,047.39
<i>ELECTRICAL</i>		\$1,274,663.41	\$13,659,452.06	\$30,901,082.44	\$3,530,652.12
<i>PLUMB</i>		\$107,601.46	\$12,590,943.11	\$2,431,792.93	\$359,223.33
<i>FIRE, LIFE SAFETY</i>		\$5,954,793.75	\$20,180,898.27	\$1,603,096.17	\$16,630,416.03
<i>ATHLETIC</i>		\$0.00	\$18,501,860.30	\$80,905,634.87	\$2,026,880.37
<i>FOOD</i>		\$2,896,962.30	\$43,711,022.66	\$7,372,355.21	\$0.00
<i>LOW VOLTAGE</i>		\$680,372.39	\$4,545,689.77	\$1,936,660.69	\$3,585,611.63
TOTALS		\$39,619,527.04	\$468,617,979.31	\$370,731,382.72	\$218,383,561.83

The Facilities Assessment Process



- **Priority One Items**

- *MEP System replacements – Life Expectancy 1-3 years*
- *Building Envelope Items such as roof replacements*
- *Life Safety Items*
- *Critical Replacements- flooring, walls*



The Facilities Assessment Process



• **Priority Two Items**

- *MEP System replacements – Life Expectancy 3-6 years*
- *Building Envelope Items such as window replacements*
- *Life Safety Items*
- *Critical Replacements- flooring, walls*
- *Restroom Renovations*
- *Locker Room Renovations*
- *Kitchen Renovations*
- *Tracks at all Middle Schools*
- *Press box upgrades at MS and HS*

The Facilities Assessment Process



• **Priority Three Items**

- *MEP System replacements – Life Expectancy 6-10 years*
- *Building Envelope Items such as waterproofing and sealants*
- *New lighting control systems*
- *Program Enhancements such as:*
 - ✦ *Floor replacements at Dance Rooms*
 - ✦ *Culinary Arts Facilities at all High Schools*
 - ✦ *Field Event upgrades at Middle Schools*
 - ✦ *Athletic Field Upgrades at High Schools*

The Facilities Assessment Process



• **Priority Four Items**

- *MEP System replacements – Life Expectancy 10+ years*
- *Program Enhancements such as:*
 - ✦ *Additional Large Group Instruction Rooms*
 - ✦ *Added staff restrooms*
 - ✦ *Additional storage*
 - ✦ *Additional Parking*

The Facilities Assessment Process



ARCHITECTURAL



LOCKERS



BLEACHERS

The Facilities Assessment Process



ARCHITECTURAL



CHALKBOARDS



FLOORING

The Facilities Assessment Process



ARCHITECTURAL



DOORS & HARDWARE

The Facilities Assessment Process



ARCHITECTURAL



MILLWORK

The Facilities Assessment Process



ARCHITECTURAL



BAND INSTRUMENT STORAGE

The Facilities Assessment Process



ARCHITECTURAL



CEILING

The Facilities Assessment Process



ARCHITECTURAL



STRUCTURAL / BUILDING MOVEMENT

The Facilities Assessment Process



BUILDING ENVELOPE



MASONRY



ROOF

The Facilities Assessment Process



BUILDING ENVELOPE



WINDOW SEALANTS



SKYLIGHTS

The Facilities Assessment Process



MECHANICAL



COOLING TOWERS



AIR HANDLING UNITS

The Facilities Assessment Process



PLUMBING



PLUMBING FIXTURES



DRINKING FOUNTAINS

The Facilities Assessment Process

ELECTRICAL



*ELECTRICAL
SWITCHGEAR*



OUTLETS

The Facilities Assessment Process



ELECTRICAL



LIGHTING

The Facilities Assessment Process



CIVIL



PAVING



DRAINAGE

The Facilities Assessment Process



- **Facilities Needs by Category**

- *Priority One Items*

- ✦ *Mechanical System Upgrades and Replacements*

- *1 Elementary Schools – Francone*

- *0 Middle Schools*

- *0 High Schools*

- *2 Support Facilities – Early Learning Center 1, Early Learning Center 2*

TOTAL PROJECTED COSTS:

\$303,767.19

The Facilities Assessment Process



- **Facilities Needs by Category**

- *Priority One Items*

- ✦ *Mechanical System Upgrades and Replacements*

- EXAMPLES:*

- *New Chillers – Life Expectancy 1-3 years*
 - *New Cooling Towers – Life Expectancy 1-3 years*
 - *Building Management System Replacements*
 - *New Exhaust Fans*

The Facilities Assessment Process



• **Facilities Needs by Category**

○ *Priority Two Items*

✦ *Mechanical System Upgrades and Replacements*

- *35 Elementary Schools – Adam, Andre, Ault, Bane, Bang, Birkes, Copeland, Emmott, Farney, Fiest, Francone, Gleason, Hairgrove, Hamilton, Hancock, Holbrook, Holmsley, Horne, Jowell, Kirk, Lee, Lieder, Lowery, Matzke, Metcalf, Millsap, Moore, Owens, Post, Reed, Sampson, Sheridan, Walker, Willbern, Wilson*
- *11 Middle Schools – Aragon, Bleyl, Cook, Goodson, Hamilton, Kahla, Labay, Spillane, Thornton, Truitt, Watkins*
- *9 High Schools – Cy-Creek, Cy-Fair, Cy-Falls, Cy-Lakes, Cy-Ridge, Cy-Springs, Cy-Woods, Jersey Village, Langham Creek*
- *14 Support Facilities – Windfern High School, ABC/ALC – East, Arena, Cy-Fair Annex, Distribution Ct / Windfern Annex, ELC 1 - Falcon Rd., ELC 2 - Smokey Trail, Food Production Center/Freezer, Maintenance Ctr, Pridgeon Stadium, Science Resource Center, Transportation–Barker, Transportation-Falcon*

TOTAL PROJECTED COSTS:

\$107,153,065.21

The Facilities Assessment Process



- **Facilities Needs by Category**

- *Priority Two Items*

- ✦ *Mechanical System Upgrades and Replacements*

- EXAMPLES*

- *New Chillers – Life Expectancy 3-6 years*
 - *New Cooling Towers – Life Expectancy 3-6 years*
 - *Building Management System Replacements*
 - *New Air Handling Units*
 - *Increased Ventilation in Educational Spaces*

The Facilities Assessment Process



- **Facilities Needs by Category**

- *Priority One Items*

- ✦ *Building Envelope Items*

- *8 Elementary Schools – Adam, Ault, Copeland, Millsap, Reed, Robison, Sheridan, Willbern*
 - *2 Middle Schools – Hamilton, Thorton*
 - *2 High Schools – Cy-Creek & Cy-Springs*
 - *1 Support Facilities – Arena/Exhibit Center*

TOTAL PROJECTED COSTS:

\$26,191,348.46

The Facilities Assessment Process



- **Facilities Needs by Category**

- *Priority One Items*

- ✦ *Building Envelope Items*

- EXAMPLES:*

- *Roof Replacements – 1-3 years*
 - *Window Replacements*

The Facilities Assessment Process



- **Facilities Needs by Category**

- *Priority Two Items*

- ✦ *Building Envelope Items*

- *28 Elementary Schools – Adam, Ault, Bane, Bang, Copeland, Duryea, Emmott, Fiest, Francone, Frazier, Hairgrove, Hamilton, Hancock, Holmsley, Horne, Jowell, Lieder, Lowery, Matzke, Metcalf, Millsap, Reed, Robison, Sheridan, Tipps, Willbern, Wilson, Yeager*
- *8 Middle Schools – Aragon, Arnold, Campbell, Cook, Hamilton, Labay, Thornton, Truitt*
- *4 High Schools – Cy-Ridge, Cy-Springs, Jersey Village, Langham Creek*
- *6 Support Facilities – Arena, Maintenance Ctr, ALC – West, Windfern High School, AG Ctr – Telge, Science Resource Center*

TOTAL PROJECTED COSTS:

\$13,452,433.48

The Facilities Assessment Process



- **Facilities Needs by Category**

- *Priority Two Items*

- ✦ *Building Envelope Items*

- EXAMPLES:*

- *Roof Replacements – 3-6 years*
 - *Window Replacements*
 - *Skylight and Metal Roof Replacements*

The Facilities Assessment Process



- **Facilities Needs by Category**

- *Priority One Items*

- ✦ *Life Safety Systems*

- *4 Elementary Schools – Bang, Metcalf, Reed, Sheridan*
 - *2 Middle Schools – Hamilton, Thornton*
 - *2 High Schools – Cy-Falls, Langham Creek*
 - *9 Support Facilities – Windern, Food Production/Freezer, SRC, Transportation-Barker, Transportation-Falcon, Transportation-Telge*

TOTAL PROJECTED COSTS:

\$5,954,793.75

The Facilities Assessment Process



- **Facilities Needs by Category**

- *Priority One Items*

- ✦ *Life Safety Systems*

- EXAMPLES:*

- *New Fire Alarm Systems*
 - *Improved Emergency Lighting*
 - *New Generators*

The Facilities Assessment Process



- **Facilities Needs by Category**

- *Priority Two Items*

- ✦ *Life Safety Systems*

- *6 Elementary Schools – Aragon, Cook, Labay, Thornton, Truitt, Watkins*
 - *12 Middle Schools – Copeland, Fiest, Hairgrove, Hamilton, Hancock, Holmsley, Horne, Lieder, Lowery, Matzke, Sheridan, Wilson.*
 - *3 High Schools – Cy-Falls, Cy-Springs, Langham Creek*
 - *4 Support Facilities - Food Production, ISC, Pridgeon Stadium, Transportation-Barker*

TOTAL PROJECTED COSTS:

\$20,180,898.27

The Facilities Assessment Process



- **Facilities Needs by Category**

- *Priority Two Items*

- ✦ *Life Safety Systems*

- EXAMPLES:*

- *Upgrades to Fire Alarm Systems*
 - *System Replacements due to age*
 - *Additional Exit Lighting*

The Facilities Assessment Process



- **Facilities Needs by Category**

- *Priority One Items*

- ✦ *Electrical Upgrades and Replacements*

- *0 Elementary Schools*

- *2 Middle Schools – Aragon, Thornton, Sheridan*

- *0 High Schools*

- *3 Support Facilities – Early Learning Center 2, Instructional Support Center, Transportation-Eldridge*

TOTAL PROJECTED COSTS:

\$1,274,663.41

The Facilities Assessment Process



- **Facilities Needs by Category**

- *Priority One Items*

- ✦ *Electrical Upgrades and Replacements*

- EXAMPLES:*

- *New Lights*

- *New Switchgear and Panels*

The Facilities Assessment Process



• **Facilities Needs by Category**

○ *Priority Two Items*

✦ *Electrical Upgrades and Replacements*

- *16 Elementary Schools – Ault, Bane, Black, Danish, Fiest, Hairgrove, Hamilton, Hancock, Horne, Lamkin, Lee, Lowery, Matzke, Millsap, Walker, Willbern*
- *10 Middle Schools – Aragon, Arnold, Bleyl, Campbell, Cook, Hamilton, Labay, Thornton, Truitt, Watkins*
- *6 High Schools – Cy-Creek, Cy-Fair, Cy-Falls, Cy-Ridge, Jersey Village, Langham Creek*
- *16 Support Facilities - Ag Ctr–Eldridge, Ag Ctr–Telge, Distribution Ctr / Windfern Annex, Falcon Annex, Food Production Ctr, Instructional Support Ctr, Maintenance Ctr, Pridgeon Stadium, Science Resource Ctr, Transportation-Barker, Transportation–Falcon, Transportation–Telge, Arena, Cy-Fair Annex*

TOTAL PROJECTED COSTS:

\$13,659,452.06

The Facilities Assessment Process



- **Facilities Needs by Category**

- *Priority Two Items*

- ✦ *Electrical Upgrades and Replacements*

- EXAMPLES:*

- *Panel Replacements*
 - *Additional Electrical Outlets*
 - *Lighting Replacements*
 - *Site Lighting*

The Facilities Assessment Process



- **Facilities Needs by Category**

- *Priority One Items*

- ✦ *Architectural Upgrades and Replacements*

- *4 Elementary Schools – Adam, Hancock, Matzke, Reed*
 - *1 Middle Schools – Labay*
 - *1 High Schools – Cy-Falls*
 - *1 Support Facilities – Transportation-Barker Cypress*

**TOTAL PROJECTED COSTS:
\$2,190,931.21**

The Facilities Assessment Process



- **Facilities Needs by Category**

- *Priority One Items*

- ✦ *Architectural Upgrades and Replacements*

- EXAMPLES:*

- *New Toilet Partitions*
 - *Structural Concerns*

The Facilities Assessment Process



- **Facilities Needs by Category**

- *Priority Two Items*

- ✦ *Architectural Upgrades and Replacements*

- *33 Elementary Schools – Adam, Andre, Ault, Bane, Bang, Copeland, Emmott, Farney, Fiest, Francone, Frazier, Hairgrove, Hamilton, Hancock, Holbrook, Holmsley, Horne, Jowell, Lieder, Lowery, Matzke, Metcalf, Millsap, Moore, Owens, Post, Reed, Sampson, Sheridan, Walker, Willbern, Wilson, Yeager*
- *15 Middle Schools – Aragon, Arnol, Bleyl, Campbell, Cook, Dean, Goodson, Hamilton, Hopper, Kahla, Labay, Spillane, Thornton, Truitt, Watkins*
- *9 High Schools – Cy-Creek, Cy-Fair, Cy-Lake, Cy-Ridge, Cy-Springs, Cy-Woods, Jersey Village, Langham Creek, Windfern*
- *18 Support Facilities - DBC/ALC East, AG Farm, Carlton Ctr, Cy-Fair Annex, Windfern Admin Annex, ELC1 , ELC2, SERS, Food Production Ctr, ISC, ICS West, Maintenance/Operations Ctr, SRC, Transportation-Barker, Transportation-Eldridge, Transportation-Falcon, Transportation-Telge*

TOTAL PROJECTED COSTS:

\$193,301,317.86

The Facilities Assessment Process



- **Facilities Needs by Category**

- *Priority Two Items*

- ✦ *Architectural Upgrades and Replacements*

- EXAMPLES:*

- *Flooring Replacements*
 - *Restroom Renovations*
 - *Casework Replacement*
 - *Ceiling Replacements*
 - *Door Replacements*

The Facilities Assessment Process



- **Facilities Needs by Category**

- *Priority One Items*

- ✦ *Athletics/Activities Upgrades and Replacements*

- *0 Elementary Schools*

- *0 Middle Schools*

- *0 High Schools*

- *0 Support Facilities*

TOTAL PROJECTED COSTS:

\$0.00

The Facilities Assessment Process



- **Facilities Needs by Category**

- *Priority Two Items*

- ✦ *Athletic/Activities Upgrades and Replacements*

- *0 Elementary Schools*

- *18 Middle Schools – Anthony, Aragon, Arnold, Bleyl, Campbell, Cook, Dean, Goodson, Hamilton, Hopper, Kahla, Labay, Salyards, Smith, Spillane, Thornton, Truitt, Watkins*

- *9 High Schools – Cy-Creek, Cy-Fair, Cy-Falls, Cy-Lakes, Cy-Ridge, Cy-Springs, Cy-Woods, Jersey Village, Langham Creek*

- *1 Support Facilities – Pridgeon Stadium*

TOTAL PROJECTED COSTS:

\$18,501,860.30

The Facilities Assessment Process



- **Facilities Needs by Category**

- *Priority Two Items*

- ✦ *Athletics/Activities Upgrades and Replacements*

- EXAMPLES:*

- *Tracks at Middle Schools*
 - *Pressbox Replacements*
 - *Locker Room Renovations*

The Facilities Assessment Process



- **Facilities Needs by Category**

- *Priority One Items*

- ✦ *Civil Upgrades and Replacements*

- *1 Elementary Schools – Wilbern*

- *0 Middle Schools*

- *0 High Schools*

- *1 Support Facilities – ELC 1 – Falcon Rd.*

TOTAL PROJECTED COSTS:

\$19,086.84

The Facilities Assessment Process



- **Facilities Needs by Category**

- *Priority One Items*

- ✦ *Civil Upgrades and Replacements*

- EXAMPLES:*

- *Drainage Corrections*
 - *Parking Replacements- Paving Failure*
 - *Sidewalk Additions for ADA access*

The Facilities Assessment Process



• **Facilities Needs by Category**

○ *Priority Two Items*

✦ *Civil Upgrades and Replacements*

- *18 Elementary Schools – Adam, Andre, Bane, Black, Danish, Emmott, Hancock, Holmsley, Horne, Jowell, Lieder, Lowery, Post, Reed, Swenke, Tipps, Warner, Willbern*
- *10 Middle Schools – Arnold, Bleyl, Cook, Dean, Goodson, Hopper, Kahla, Labay, Spillane, Thornton*
- *8 High Schools – Cy-Creek, Cy-Fair, Cy-Falls, Cy-Lakes, Cy-Springs, Cy-Woods, Jersey Village, Langham Creek*
- *9 Support Facilities - Falcon Annex, Food Production Ctr/ Freezer, Pridgeon Stadium, Science Resource Ctr, Transportation-Barker, Transportation-Falcon, Transportation-Telge*

TOTAL PROJECTED COSTS:

\$41,521,296.59

The Facilities Assessment Process



- **Facilities Needs by Category**

- *Priority Two Items*

- ✦ *Civil Upgrades and Replacements*

- EXAMPLES:*

- *Drainage Improvements*
 - *Paving and Striping of Parking Lots- Critical*
 - *Sidewalk Additions and Replacement*
 - *Erosion Control*

The Facilities Assessment Process



• Enhancements

- *Wood floors in Dance Rooms*
- *Culinary Arts Facilities at all High Schools*
- *Improvements to Athletic Facilities*
 - *Artificial Turf*
 - *Dugout and Bull Pen Improvements*
 - *Additional Athletic Field Netting*
- *Additional Storage*
- *Additional Large Group Instruction Rooms*

The Facilities Assessment Process



• Major Renovations

- *Included in 2004 and 2007 Bonds*
- *Renovation of Entire Facility for Extended Life*
- *Campuses for Consideration:*

GROUP 1

Adam ES

Bane ES

Watkins MS

GROUP 2

Francone ES

Lieder ES

Millsap ES

Yeager ES

The Facilities Assessment Process



REVIEW

• Facilities Needs by Priority

○ <i>Priority One Items</i>	\$39,619,527.04
○ <i>Priority Two Items</i>	\$468,617,979.31
○ <i>Priority Three Items</i>	\$370,731,382.72
○ <i>Priority Four Items</i>	\$218,383,561.83
✦ <i>ADA/Asbestos/Emergency</i>	\$ 15,000,000.00

Total Projected Costs:

\$1,112,352,450.90

The Facilities Assessment Process



Questions?



CYPRESS  **FAIRBANKS**
INDEPENDENT SCHOOL DISTRICT

LEARN • EMPOWER • ACHIEVE • DREAM